

# SECTION 300

## TYPICAL STREET SECTIONS

301 56 FOOT SECONDARY RESIDENTIAL STREET

302 60 FOOT PRIMARY RESIDENTIAL STREET

303 84 FOOT FOUR LANE MAJOR ROAD

304 CUL-DE-SAC

305 SPEED HUMP LAYOUT

306 LADDER STYLE CROSSWALK MARKING

C:\Box\Projects\CISOL\_Solvang\CISOL\_200359.02 Standard Detail Update2\_Eng\CAD\1 Design\Details\300\300.dwg

Fri, 11 Jun 21 06:53:48 AM



### CITY OF SOLVANG - STANDARD DETAILS

### SECTION 300 - TYPICAL STREET SECTIONS

APPROVED BY PUBLIC  
WORKS DIRECTOR:  
MATT VAN DER LINDEN, PE \_\_\_\_\_

DO NOT SCALE  
DRAWING

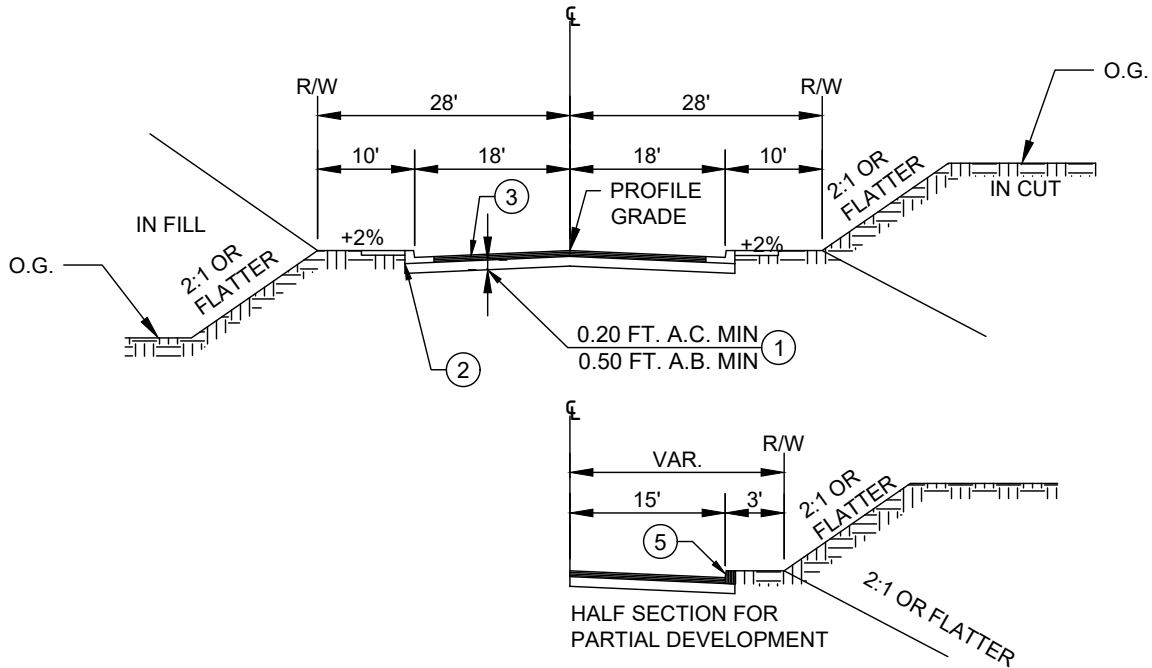
ISSUED: -  
REVISED: -

DRAWING NUMBER

**300**  
1 OF 1

C:\Box\Projects\CISOL\_Solvang\CISOL\_200359.02 Standard Detail Update\2\_Eng\CAD\1 Design\Details\300\301.dwg

Fri, 11 Jun 21 06:54:18 AM



**TYPICAL SECTION**

**NOTES:**

- ① ACTUAL STRUCTURAL SECTION WILL BE DETERMINED BY "R" VALUES OF IN PLACE SOILS USING CALTRANS TEST METHOD 301. MIN. T. I. 6.0.
- ② SB-18 CURB AND GUTTER SHALL BE INSTALLED PER STD. DTL. 402.
- ③ MINIMUM PAVEMENT CROSS SLOPE SHALL BE 2.0%.
- ④ MINIMUM LONGITUDINAL GRADE AT CENTERLINE SHALL BE 0.50%.
- ⑤ TYPE "A" ASPHALT CONCRETE BERMS SHALL BE INSTALLED ON HALF SECTION CONSTRUCTION WHERE NEEDED FOR DRAINAGE CONTROL.
- ⑥ FOG SEAL SHALL BE APPLIED 2 WEEKS AFTER APPLICATION OF ASPHALT



**CITY OF SOLVANG - STANDARD DETAILS**

**56 FOOT SECONDARY RESIDENTIAL STREET**

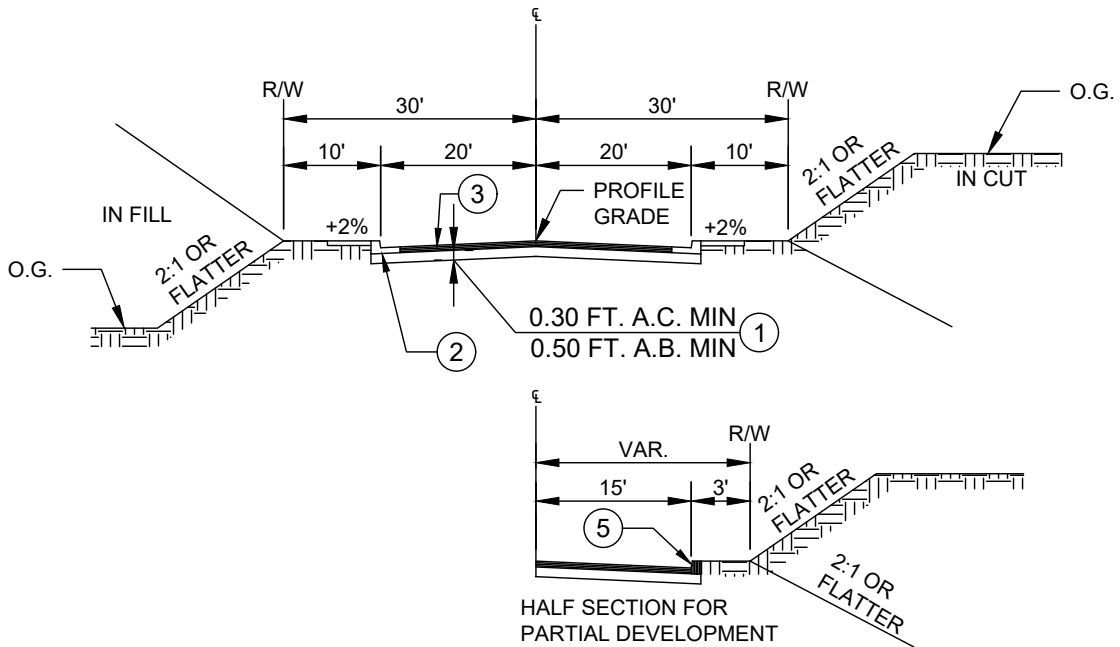
APPROVED BY PUBLIC WORKS DIRECTOR:  
MATT VAN DER LINDEN, PE \_\_\_\_\_

DO NOT SCALE  
DRAWING

ISSUED: -  
REVISED: -

**DRAWING NUMBER**

**301**  
1 OF 1



## TYPICAL SECTION

**NOTES:**

- ① ACTUAL STRUCTURAL SECTION WILL BE DETERMINED BY "R" VALUES OF IN PLACE SOILS USING CALTRANS TEST METHOD 301. MIN. T. I. 6.0.
- ② SB-18 CURB AND GUTTER SHALL BE INSTALLED PER STD. DTL. 402.
- ③ MINIMUM PAVEMENT CROSS SLOPE SHALL BE 2.0%.
- ④ MINIMUM LONGITUDINAL GRADE AT CENTERLINE SHALL BE 0.50%.
- ⑤ TYPE "A" ASPHALT CONCRETE BERMS SHALL BE INSTALLED ON HALF SECTION CONSTRUCTION WHERE NEEDED FOR DRAINAGE CONTROL.
- ⑥ FOG SEAL SHALL BE APPLIED 2 WEEKS AFTER APPLICATION OF ASPHALT



### CITY OF SOLVANG - STANDARD DETAILS

### 60 FOOT PRIMARY RESIDENTIAL STREET

APPROVED BY PUBLIC WORKS DIRECTOR:  
MATT VAN DER LINDEN, PE \_\_\_\_\_

DO NOT SCALE  
DRAWING

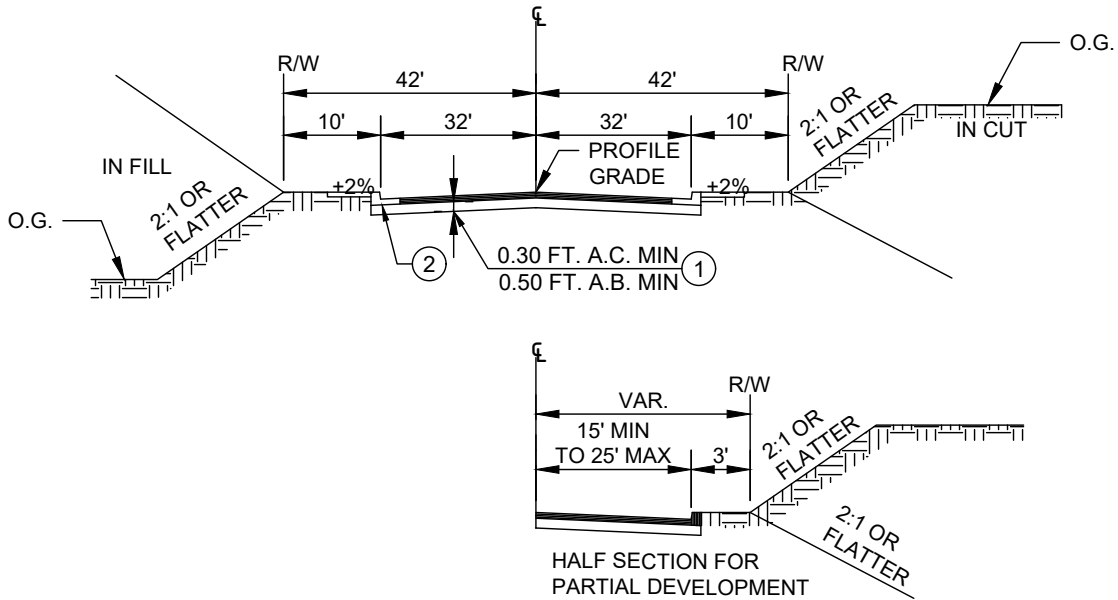
ISSUED: -  
REVISED: -

**DRAWING NUMBER**

**302**  
1 OF 1

C:\Box\Projects\CISOL\_Solvang\CISOL\_200359.02 Standard Detail Update\2\_Eng\CAD\1 Design\Details\300\303.dwg

Fri, 11 Jun 21 06:56:35 AM



## TYPICAL SECTION

### NOTES:

- ① ACTUAL STRUCTURAL SECTION WILL BE DETERMINED BY "R" VALUES OF IN PLACE SOILS USING CALTRANS TEST METHOD 301. MIN. T. I. 6.0.
- ② SB-18 CURB AND GUTTER SHALL BE INSTALLED PER STD. DTL. 402.
- ③ MINIMUM PAVEMENT CROSS SLOPE SHALL BE 2.0%.
- ④ MINIMUM LONGITUDINAL GRADE AT CENTERLINE SHALL BE 0.50%.
- ⑤ TYPE "A" ASPHALT CONCRETE BERMS SHALL BE INSTALLED ON HALF SECTION CONSTRUCTION WHERE NEEDED FOR DRAINAGE CONTROL.
- ⑥ FOG SEAL SHALL BE APPLIED 2 WEEKS AFTER APPLICATION OF ASPHALT



## CITY OF SOLVANG - STANDARD DETAILS

### 84 FOOT FOUR LANE MAJOR ROAD

APPROVED BY PUBLIC  
WORKS DIRECTOR:  
MATT VAN DER LINDEN, PE \_\_\_\_\_

DO NOT SCALE  
DRAWING

ISSUED: -  
REVISED: -

DRAWING NUMBER

**303**  
1 OF 1

C:\Box\Projects\CISOL\_Solvang\CISOL\_200359.02 Standard Detail Update\2\_Eng\CAD\1 Design\Details\300\304.dwg  
 Fri, 11 Jun 21 06:56:53 AM

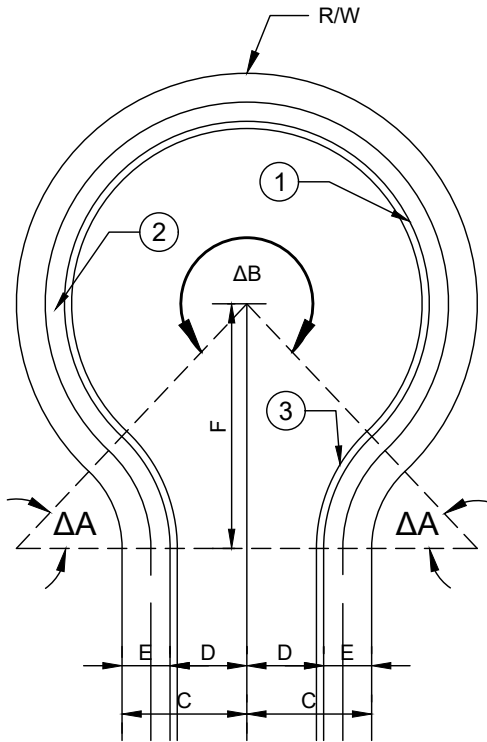


TABLE A

DIMENSIONS				
R/W	C	D	E	F
56'	28'	18'	10'	50.99'
60'	30'	20'	10'	68.15'

TABLE B

CURVE A					
R/W	DELTA A	CURB		R/W	
		R=	L=	R=	L=
56'	42°50'00"	37'	27.66'	27'	20.18'
60'	29°35'31"	100'	51.65'	90'	46.48'

TABLE C

CURVE B					
R/W	DELTA A	CURB		R/W	
		R=	L=	R=	L=
56'	265°40'00"	38'	76.20'	48'	222.56'
60'	239°11'02"	38'	58.63'	48'	200.38'

**NOTES:**

- ① MINIMUM GUTTER PROFILE GRADE OF 0.50% SHALL BE PROVIDED TO AVOID PONDING IN THE CUL-DE-SAC.
- ② THE SIDEWALK WIDTH SHALL BE PER STANDARD DETAIL 403.
- ③ THE CURB AND GUTTER SHALL BE THE SAME AS FOR THE STREET SECTION.
- ④ ALL LAYOUT INFORMATION IS SHOWN IN TABLES A, B, AND C.
- ⑤ MINIMUM STRUCTURAL SECTION DIMENSIONS SHALL BE THE SAME AS THE STREET SECTION.
- ⑥ THE CROSS SLOPE SHALL BE A MINIMUM OF 2%.



**CITY OF SOLVANG - STANDARD DETAILS**

**CUL-DE-SAC**

APPROVED BY PUBLIC WORKS DIRECTOR:  
 MATT VAN DER LINDEN, PE \_\_\_\_\_

DO NOT SCALE  
 DRAWING

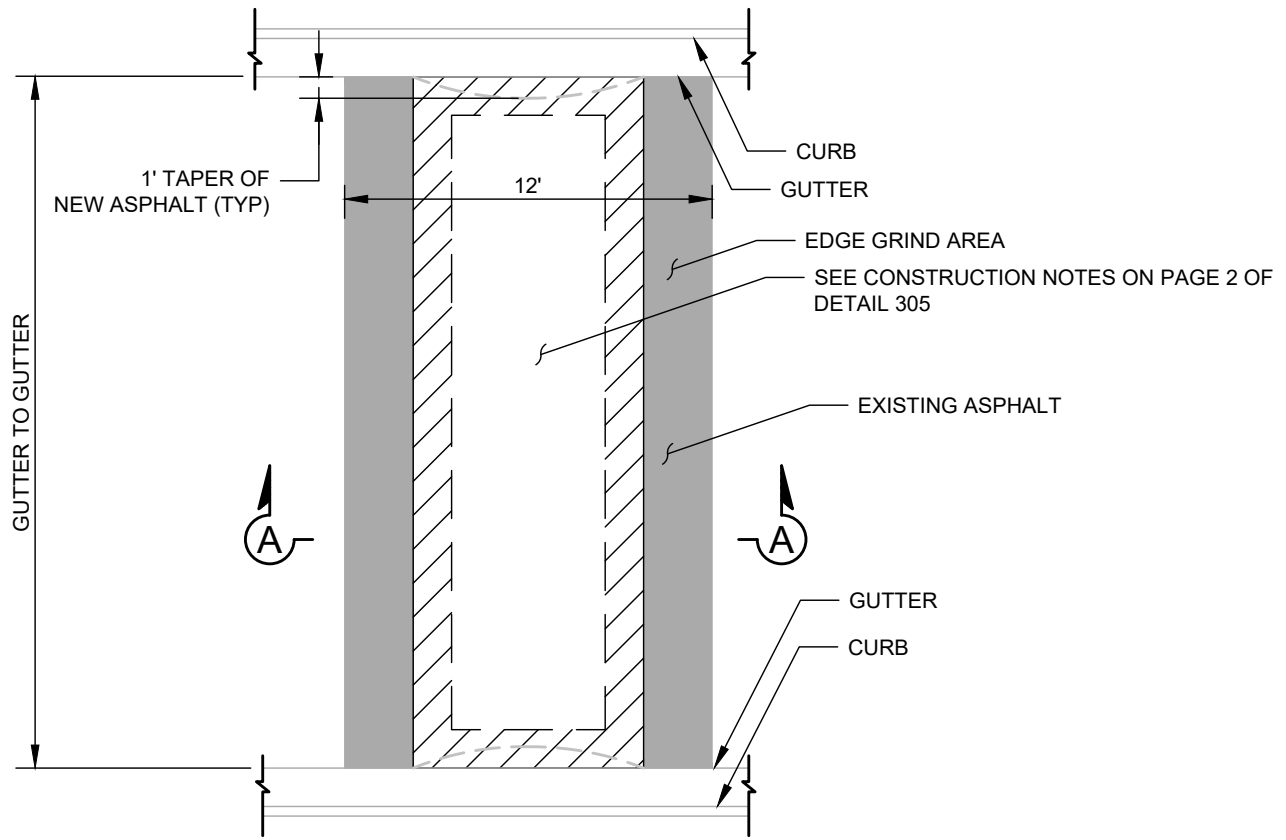
ISSUED: -  
 REVISED: -

**DRAWING NUMBER**

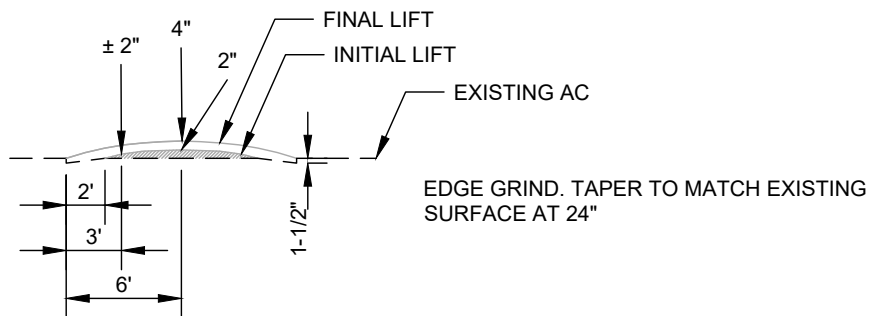
**304**  
 1 OF 1

C:\Box\Projects\CISOL\_Solvang\CISOL\_200359.02 Standard Detail Update\2\_Eng\CAD\1 Design\Details\300\305.dwg

Fri, 11 Jun 21 06:56:39 AM



**SPEED HUMP LAYOUT**



**SECTION A-A**



**CITY OF SOLVANG - STANDARD DETAILS**

**SPEED HUMP LAYOUT**

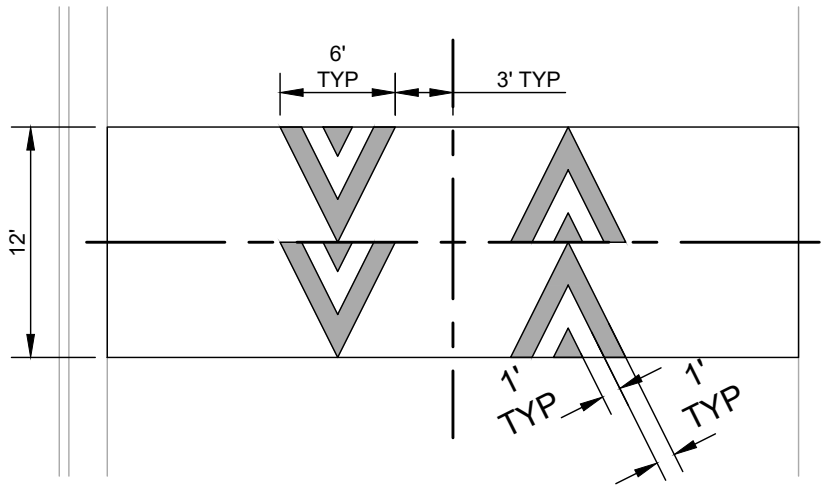
APPROVED BY PUBLIC WORKS DIRECTOR:  
MATT VAN DER LINDEN, PE \_\_\_\_\_

DO NOT SCALE  
DRAWING

ISSUED: -  
REVISED: -

**DRAWING NUMBER**

**305**  
1 OF 2



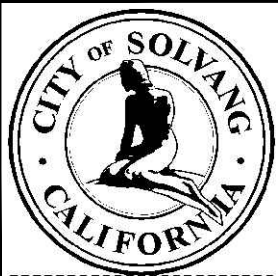
## SPEED HUMP LAYOUT

**NOTES:**

1. EDGE GRIND EXISTING AC 1-1/2" DEEP. TAPER TO MATCH EXISTING SURFACE AT 24" FROM EDGE.
2. APPLY TRACK COAT TO ALL CONTACT SURFACES AND BETWEEN LIFTS.
3. MANUALLY SPREAD HOT 1/2" MIX AC IN EACH LIFT.
4. COMPACT EACH LIFT WITH STEEL ROLLER TO WITHIN  $\pm 1/4$ " OF SPECIFIED DIMENSIONS.
5. APPLY MARKINGS PER PLAN IN TWO APPLICATIONS, A MINIMUM OF ONE WEEK APART.
6. ALL CONSTRUCTION SHALL CONFORM TO THE CITY OF SOLVANG, CALTRANS, AND APWA STANDARDS, AS APPLICABLE.

C:\Box\Projects\CISOL\_Solvang\CISOL\_200359.02 Standard Detail Update2\_Eng\CAD\1 Design\Details\300\305.dwg

Fri, 11 Jun 21 06:56:39 AM



### CITY OF SOLVANG - STANDARD DETAILS

### SPEED HUMP LAYOUT

APPROVED BY PUBLIC WORKS DIRECTOR:  
MATT VAN DER LINDEN, PE \_\_\_\_\_

DO NOT SCALE  
DRAWING

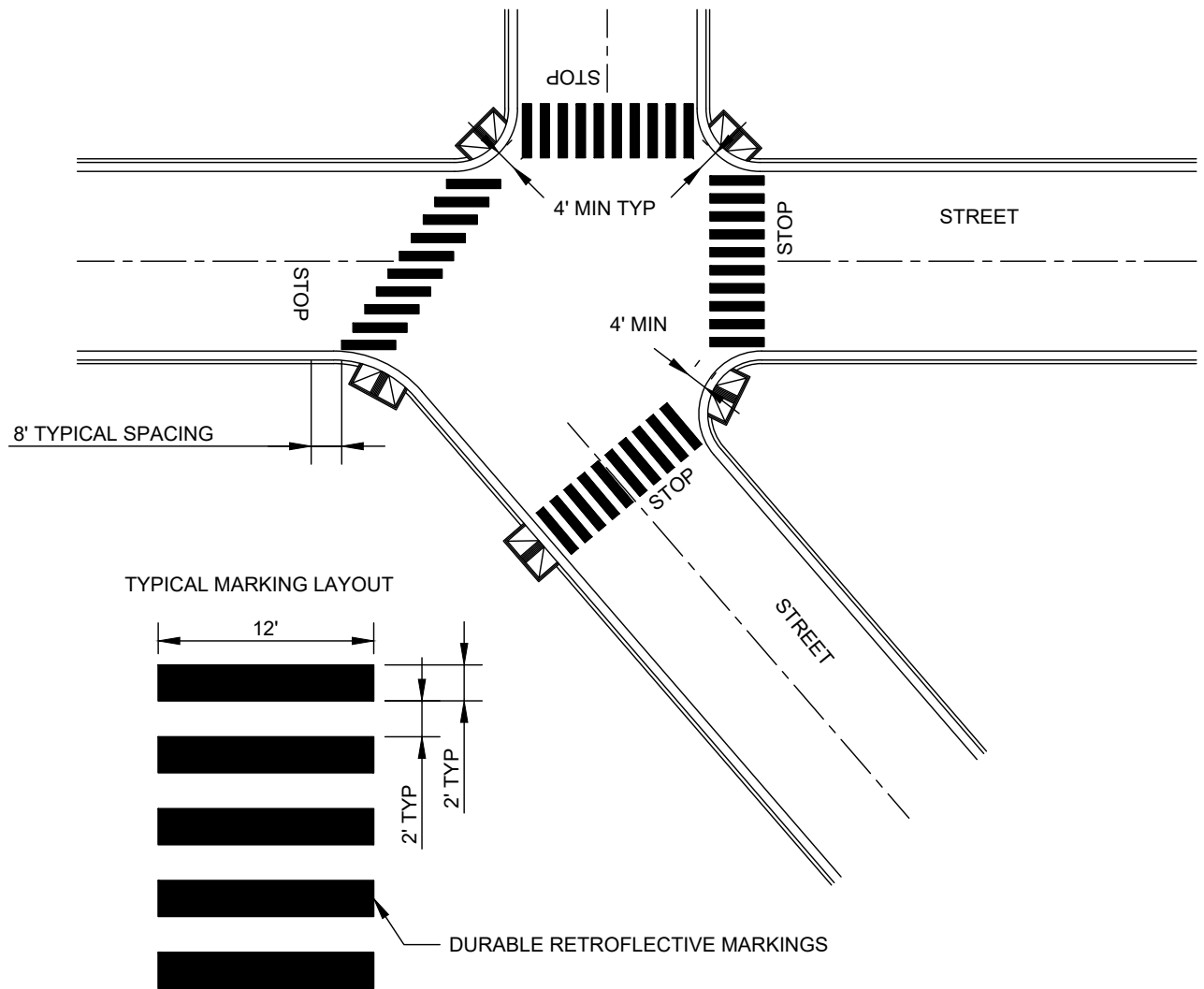
ISSUED: -  
REVISED: -

**DRAWING NUMBER**

**305**  
2 OF 2

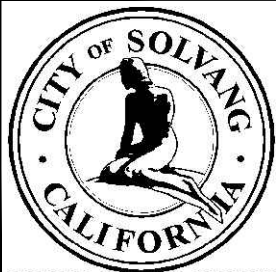
C:\Box\Projects\CISOL\_Solvang\CISOL\_200359.02 Standard Detail Update\2\_Eng\CAD\1 Design\Details\300\306.dwg

Fri, 11 Jun 21 06:57:01 AM



**NOTES:**

1. REMOVE EXISTING STRIPING FROM ASPHALT BY WET SAND BLASTING OR HIGH PRESSURE WATER. REMOVE FROM CONCRETE BY WATER BLASTING ONLY.
2. CROSSWALK STRIPING SHALL BE APPROVED PAINT AND GLASS BEADS OR EQUAL AND PREMARKED BY FLINT TRADING OR EQUAL AS APPROVED BY THE CITY ENGINEER.
3. STRIPING COLOR SHALL BE WHITE UNLESS SPECIFIED OTHERWISE. STRIPING SHALL BE YELLOW IF ADJACENT TO SCHOOL GROUNDS OR WHEN OTHERWISE DIRECTED BY THE CITY ENGINEER IN CONFORMANCE WITH CVC § 21368.
4. UNIFORMLY SPACE LADDER MARKS ACROSS THE STREET WIDTH.
5. LAYOUT MARKING CONFIGURATION AND REQUEST APPROVAL OF THE CITY ENGINEER PRIOR TO INSTALLATION.



**CITY OF SOLVANG - STANDARD DETAILS**

**LADDER STYLE CROSSWALK MARKING**

APPROVED BY PUBLIC WORKS DIRECTOR:  
MATT VAN DER LINDEN, PE \_\_\_\_\_

**DO NOT SCALE  
DRAWING**

ISSUED: 7/7/2021  
REVISED: -

**DRAWING NUMBER**

**306**  
1 OF 1