

SECTION 400
TYPICAL STREET SECTIONS

- 401 56 FOOT SECONDARY RESIDENTIAL STREET
- 402 60 FOOT PRIMARY RESIDENTIAL STREET
- 403 84 FOOT FOUR LANE MAJOR ROAD
- 404 CUL-DE-SAC
- 405 SPEED HUMP LAYOUT
- 406 LADDER STYLE CROSSWALK MARKING



CITY OF SOLVANG - STANDARD DETAILS

ISSUED: 11-24-2003
REVISED:

SECTION 400 - TABLE OF CONTENTS

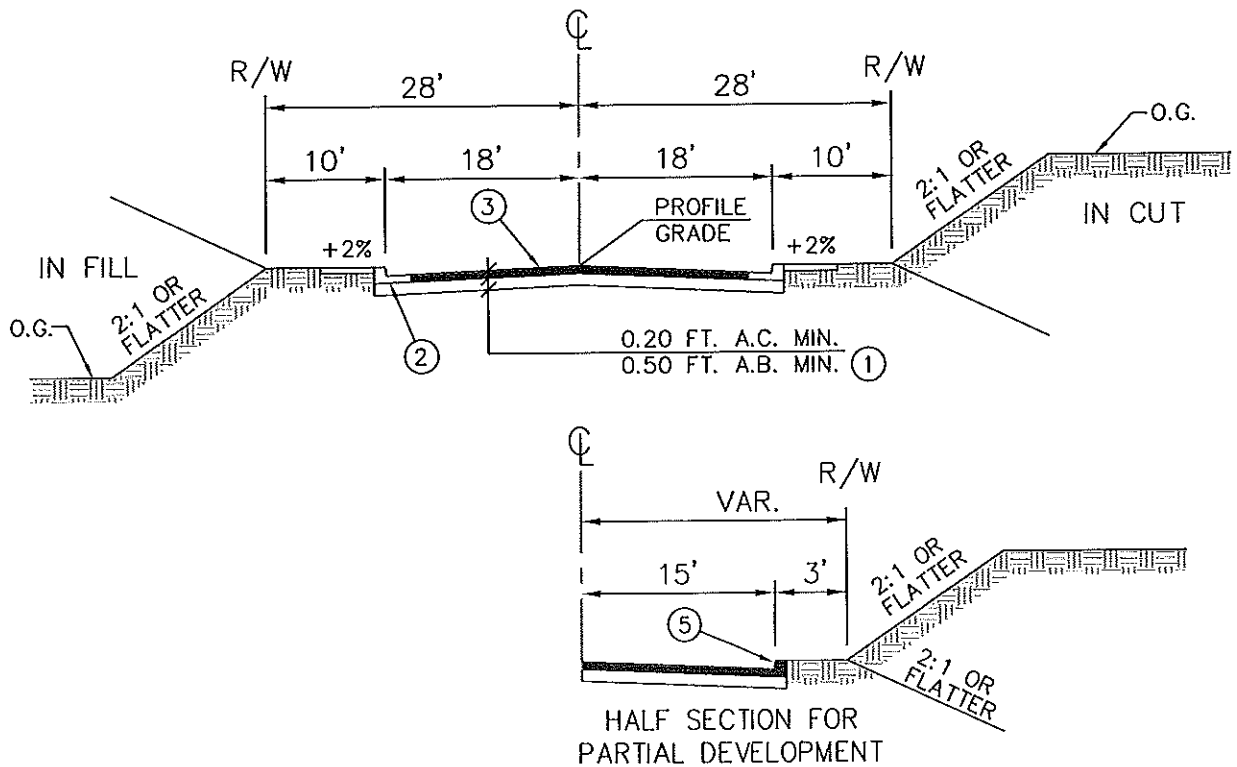
DRAWING NUMBER

400
1 OF 1

APPROVED BY DIRECTOR
OF PUBLIC WORKS

A handwritten signature in black ink, appearing to read "Julie C. [unclear]".

DO NOT SCALE
DRAWING



TYPICAL SECTION

- ① ACTUAL STRUCTURAL SECTION WILL BE DETERMINED BY "R" VALUES OF IN PLACE SOILS USING CALTRANS TEST METHOD 301. MIN. T. I. 5.0.
- ② SB-18 CURB AND GUTTER SHALL BE INSTALLED PER STD. DTL. 302.
- ③ MINIMUM PAVEMENT CROSS SLOPE SHALL BE 2.0%.
- ④ MINIMUM LONGITUDINAL GRADE AT CENTERLINE SHALL BE 0.50%.
- ⑤ TYPE "A" ASPHALT CONCRETE BERMS SHALL BE INSTALLED ON HALF SECTION CONSTRUCTION WHERE NEEDED FOR DRAINAGE CONTROL.



CITY OF SOLVANG - STANDARD DETAILS

ISSUED: 11-24-2003
REVISED:

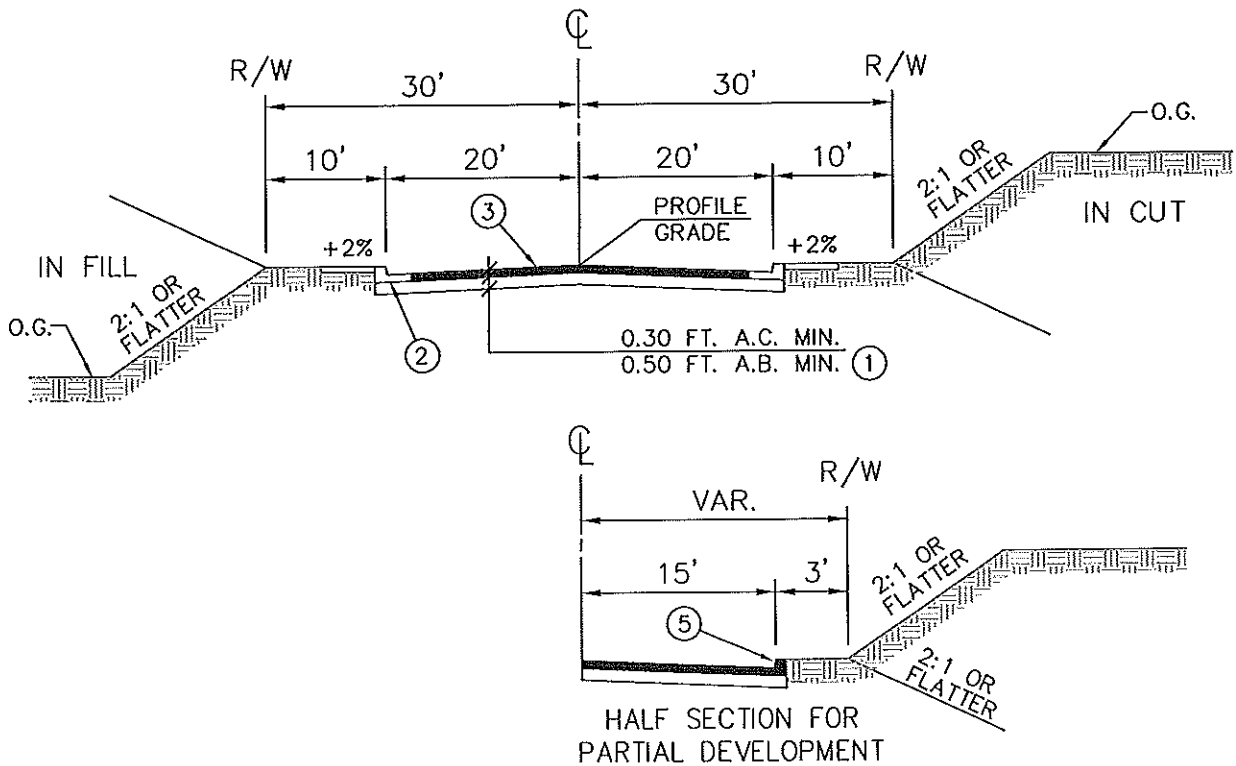
56 FOOT SECONDARY
RESIDENTIAL STREET

DRAWING NUMBER

401
1 OF 1

APPROVED BY DIRECTOR
OF PUBLIC WORKS

DO NOT SCALE
DRAWING



TYPICAL SECTION

- ① ACTUAL STRUCTURAL SECTION WILL BE DETERMINED BY "R" VALUES OF IN PLACE SOILS USING CALTRANS TEST METHOD 301. MIN. T. I. 6.0.
- ② SB-18 CURB AND GUTTER SHALL BE INSTALLED PER STD. DTL. 302.
- ③ MINIMUM PAVEMENT CROSS SLOPE SHALL BE 2.0%.
- ④ MINIMUM LONGITUDINAL GRADE AT CENTERLINE SHALL BE 0.50%.
- ⑤ TYPE "A" ASPHALT CONCRETE BERMS SHALL BE INSTALLED ON HALF SECTION CONSTRUCTION WHERE NEEDED FOR DRAINAGE CONTROL.
- ⑥ FOG SEAL SHALL BE APPLIED 2 WEEKS AFTER APPLICATION OF ASPHALT



CITY OF SOLVANG - STANDARD DETAILS

60 FOOT PRIMARY
RESIDENTIAL STREET

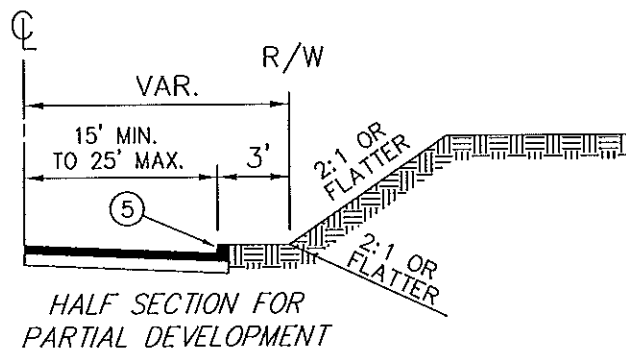
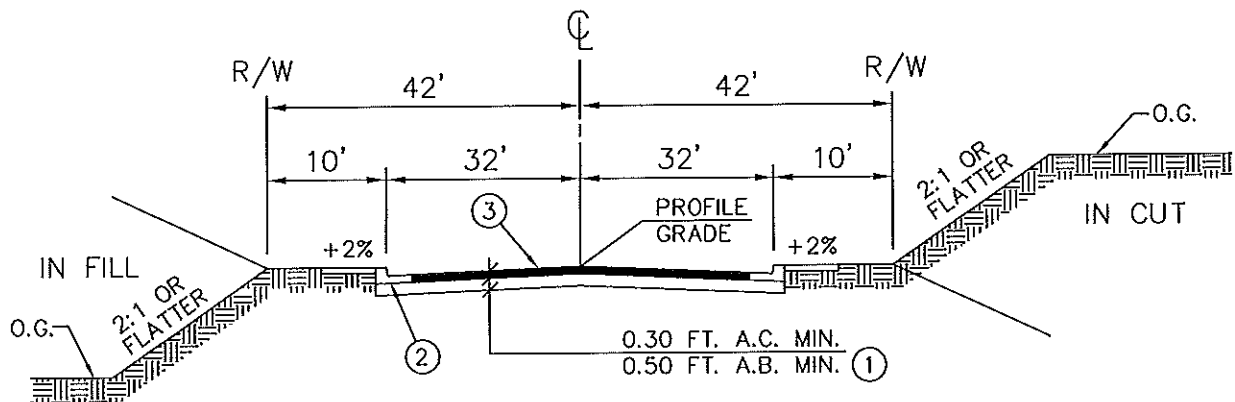
APPROVED BY DIRECTOR
OF PUBLIC WORKS

DO NOT SCALE
DRAWING

ISSUED: 11-24-2003
REVISED:

DRAWING NUMBER

402
1 OF 1



TYPICAL SECTION

- ① ACTUAL STRUCTURAL SECTION WILL BE DETERMINED BY "R" VALUES OF IN PLACE SOILS USING CALTRANS TEST METHOD 301. MIN. T. I. 7.5.
- ② SB-24 CURB AND SIDEWALK SHALL BE INSTALLED PER STD. DTL. 302.
- ③ MINIMUM PAVEMENT CROSS SLOPE SHALL BE 2.0%.
- ④ MINIMUM LONGITUDINAL GRADE AT CENTERLINE SHALL BE 0.50%.
- ⑤ TYPE "A" ASPHALT CONCRETE BERMS SHALL BE INSTALLED ON HALF SECTION CONSTRUCTION WHERE NEEDED FOR DRAINAGE CONTROL.
- ⑥ FOG SEAL SHALL BE APPLIED 2 WEEKS AFTER APPLICATION OF ASPHALT



CITY OF SOLVANG - STANDARD DETAILS

ISSUED: 11-24-2003
REVISED:

84 FOOT FOUR LANE MAJOR ROAD

DRAWING NUMBER

403
1 OF 1

APPROVED BY DIRECTOR
OF PUBLIC WORKS

DO NOT SCALE
DRAWING

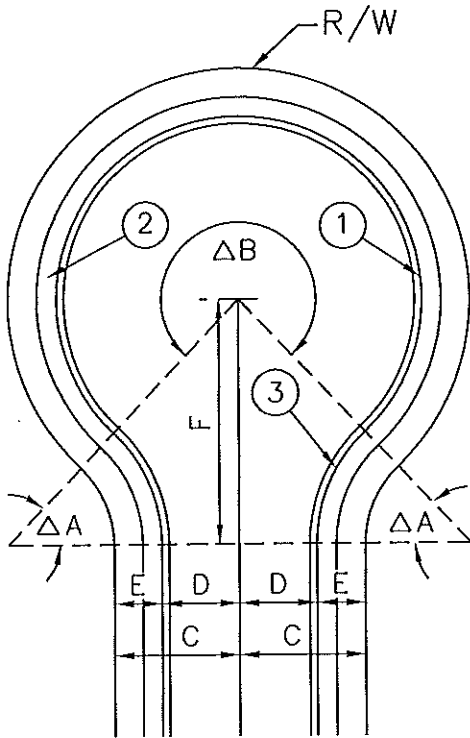


TABLE A

DIMENSIONS				
R/W	C	D	E	F
56'	28'	18'	10'	50.99'
60'	30'	20'	10'	68.15'

TABLE B

CURVE A					
R/W	DELTA A	CURB		R/W	
		R=	L=	R=	L=
56'	42°50'00"	37'	27.66'	27'	20.18'
60'	29°35'31"	100'	51.65'	90'	46.48'

TABLE C

CURVE B					
R/W	DELTA B	CURB		R/W	
		R=	L=	R=	L=
56'	265°40'00"	38'	76.20'	48'	222.56'
60'	239°11'02"	38'	58.63'	48'	200.38'

- ① MINIMUM GUTTER PROFILE GRADE OF 0.50% SHALL BE PROVIDED TO AVOID PONDING IN THE CUL-DE-SAC.
- ② THE SIDEWALK WIDTH SHALL BE PER STANDARD DETAIL 306.
- ③ THE CURB AND GUTTER SHALL BE THE SAME AS FOR THE STREET SECTION.
- ④ ALL LAYOUT INFORMATION IS SHOWN IN TABLES A, B, AND C.
- ⑤ MINIMUM STRUCTURAL SECTION DIMENSIONS SHALL BE THE SAME AS THE STREET SECTION.
- ⑥ THE CROSS SLOPE SHALL BE A MINIMUM OF 2%.



CITY OF SOLVANG - STANDARD DETAILS

ISSUED: 11-24-2003
REVISED:

CUL-DE-SAC

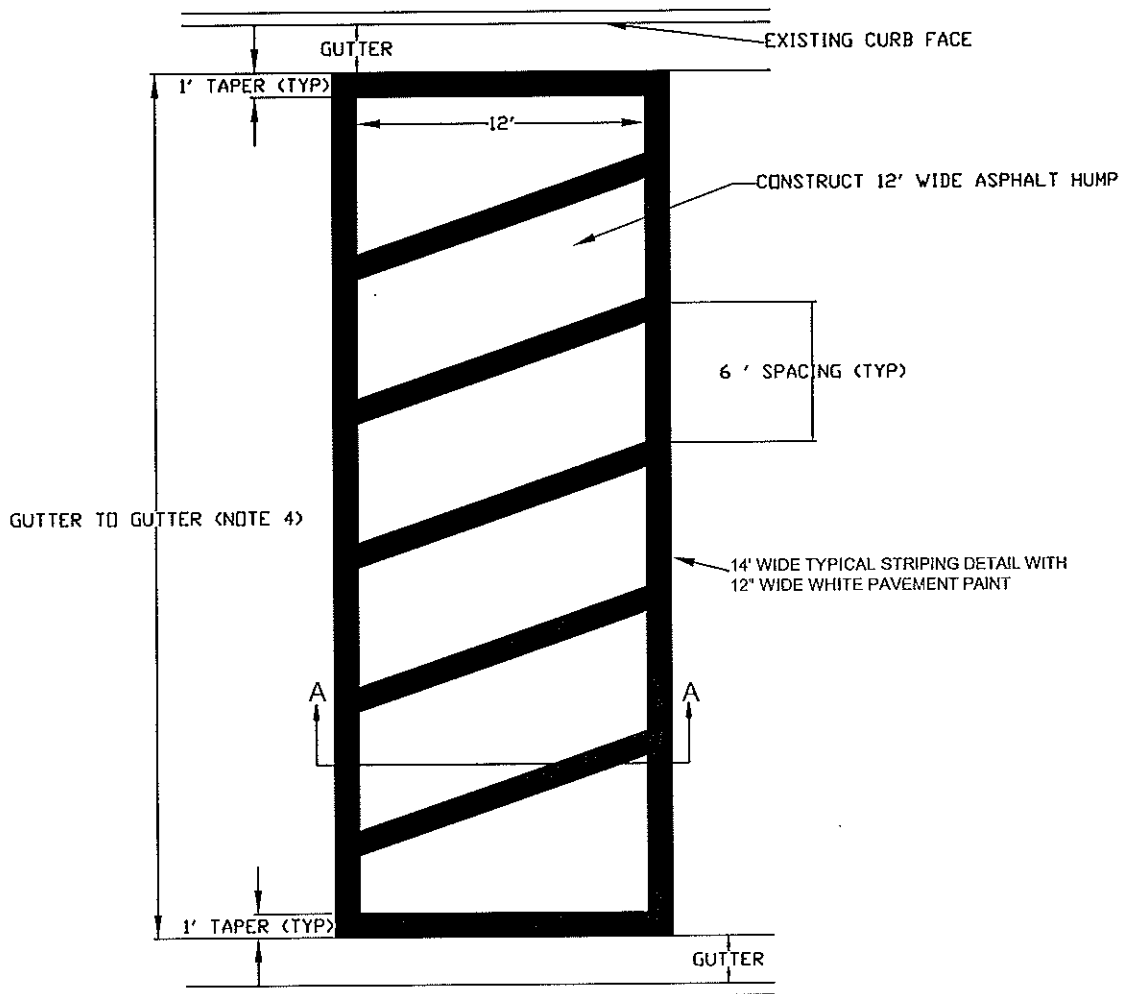
DRAWING NUMBER

404

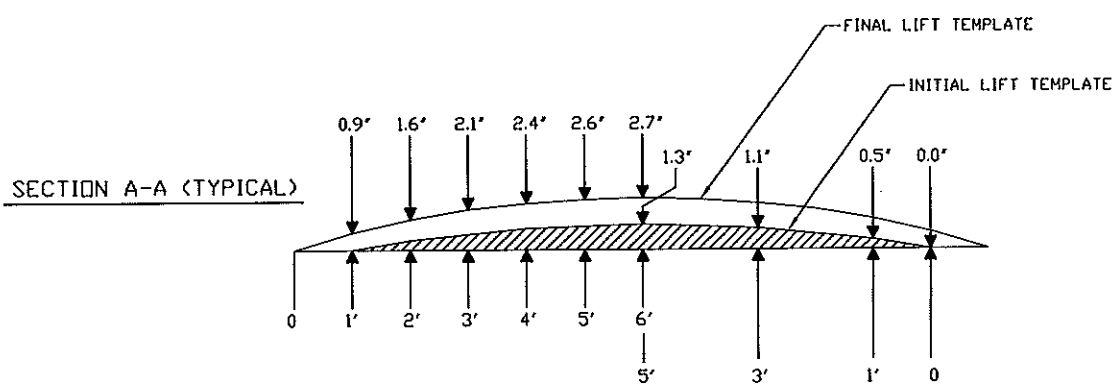
APPROVED BY DIRECTOR
OF PUBLIC WORKS

DO NOT SCALE
DRAWING

1 OF 1



- NOTES:
1. HUMPS SHALL BE CONSTRUCTED WITHIN +/- .1' OF FINAL LIFT HEIGHT DIMENSIONS.
 2. USING TWO TEMPLATES, THE ASPHALT SHOULD BE HAND LAID IN TWO LIFTS AND HOT ROLLED OVER A TACK COAT.
 3. TEMPLATES ARE TO BE PROVIDED AND RETAINED BY THE CONTRACTOR.
 4. CONSTRUCT HUMP TO 2' FROM CURB FACE, UNLESS OTHERWISE MARKED IN THE FIELD.



CITY OF SOLVANG - STANDARD DETAILS

ISSUED: 11-24-2003
 REVISED:

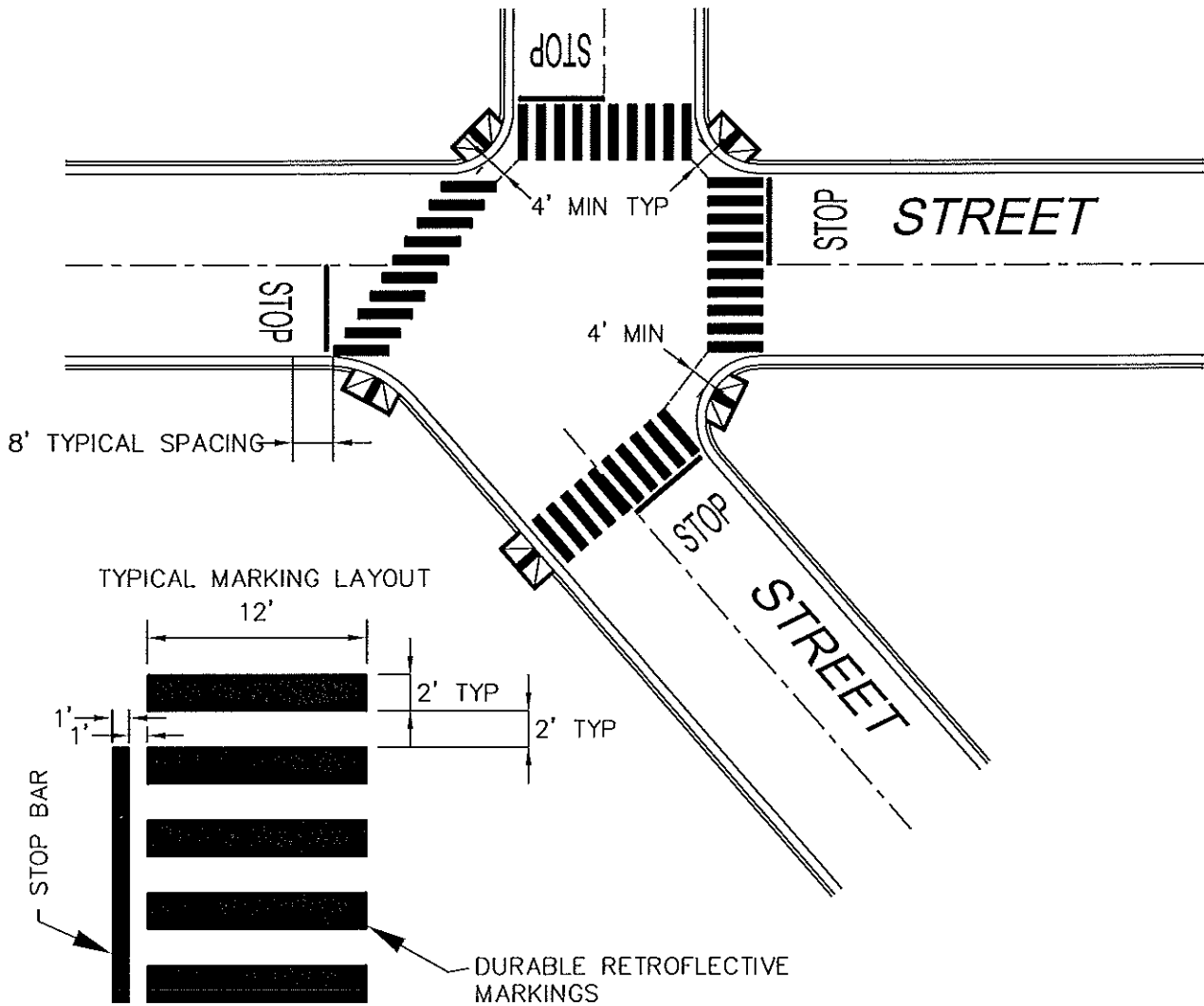
SPEED HUMP LAYOUT

DRAWING NUMBER

405
 1 OF 1

APPROVED BY DIRECTOR
 OF PUBLIC WORKS

DO NOT SCALE
 DRAWING



NOTES

1. REMOVE EXISTING STRIPING FROM ASPHALT BY WET SAND BLASTING OR HIGH PRESSURE WATER. REMOVE FROM CONCRETE BY WATER BLASTING ONLY.
2. CROSSWALK STRIPING SHALL BE APPROVED PAINT AND GLASS BEADS OR EQUAL AND PREMARKED BY FLINT TRADING OR EQUAL AS APPROVED BY THE CITY ENGINEER.
3. STRIPING COLOR SHALL BE WHITE UNLESS SPECIFIED OTHERWISE. STRIPING SHALL BE YELLOW IF ADJACENT TO SCHOOL GROUNDS OR WHEN OTHERWISE DIRECTED BY THE CITY ENGINEER IN CONFORMANCE WITH CVC §21368.
4. UNIFORMLY SPACE LADDER MARKS ACROSS THE STREET WIDTH.
5. LAYOUT MARKING CONFIGURATION AND REQUEST APPROVAL OF THE CITY ENGINEER PRIOR TO INSTALLATION.



CITY OF SOLVANG - STANDARD DETAILS

LADDER STYLE CROSSWALK MARKING

APPROVED BY DIRECTOR
OF PUBLIC WORKS

DO NOT SCALE
DRAWING

ISSUED: 11-24-2003
REVISED: 6-3-2008

DRAWING NUMBER

406
1 OF 1